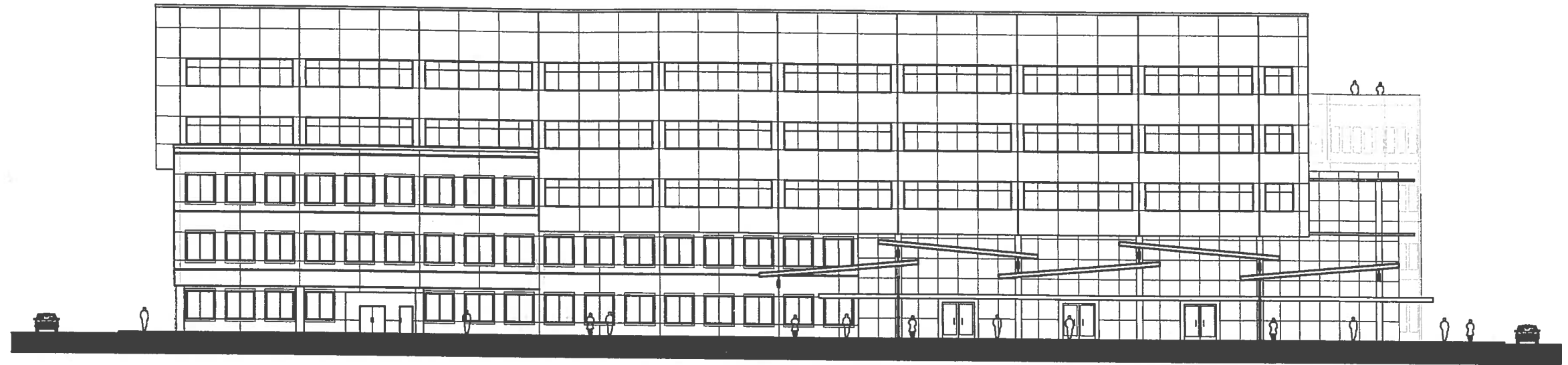
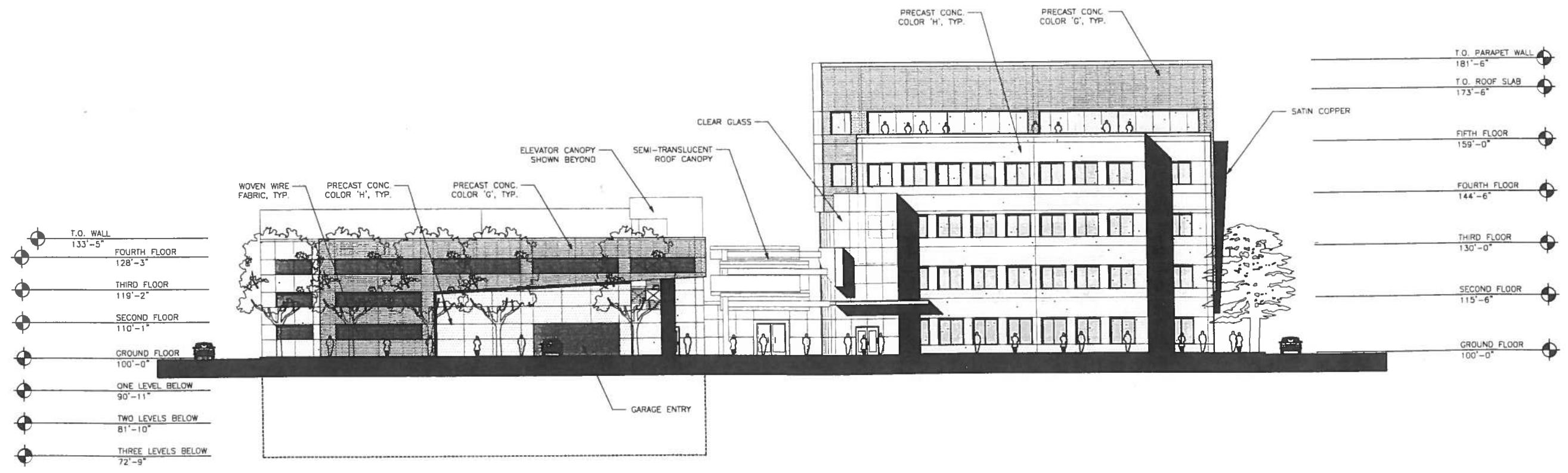


NORTH ELEVATION



SOUTH ELEVATION

F E D C B A



EAST ELEVATION

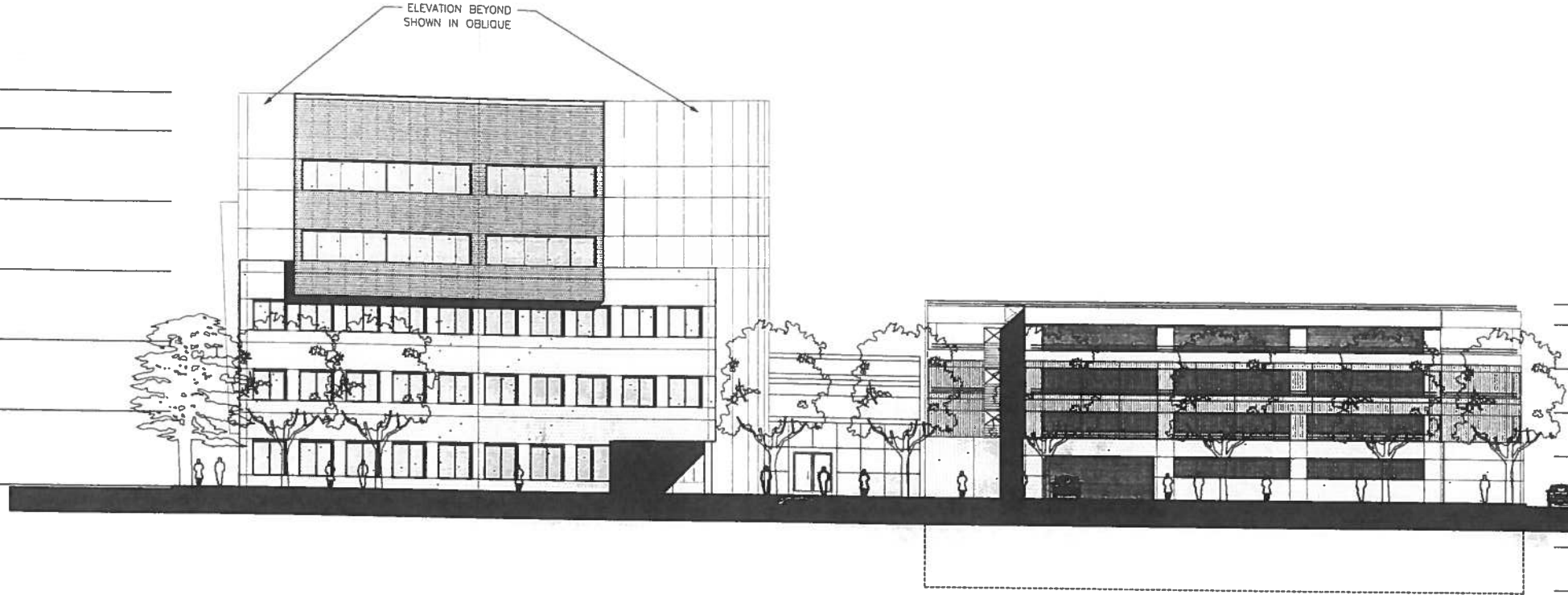
A

B

C

ELEVATION BEYOND SHOWN IN OBLIQUE

- T.O. PARAPET WALL
181'-6"
- T.O. ROOF SLAB
173'-6"
- FIFTH FLOOR
159'-0"
- FOURTH FLOOR
144'-6"
- THIRD FLOOR
130'-0"
- SECOND FLOOR
115'-6"
- GROUND FLOOR
100'-0"



- T.O. WALL
141'-6"
- FIFTH FLOOR
137'-4"
- FOURTH FLOOR
128'-3"
- THIRD FLOOR
119'-2"
- SECOND FLOOR
110'-1"
- GROUND FLOOR
100'-0"
- ONE LEVEL BELOW
90'-11"
- TWO LEVELS BELOW
81'-10"

WEST ELEVATION

13 12 11 10 9 8 7 6 5 4 3 2 1

ELEVATION BEYOND
IN OBLIQUE

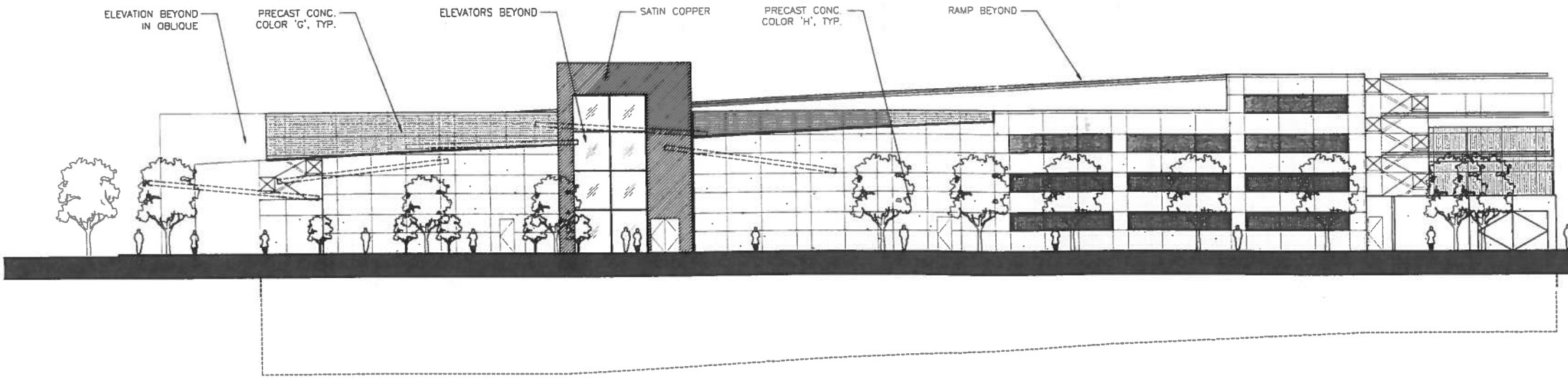
PRECAST CONG.
COLOR 'G', TYP.

ELEVATORS BEYOND

SATIN COPPER

PRECAST CONG.
COLOR 'H', TYP.

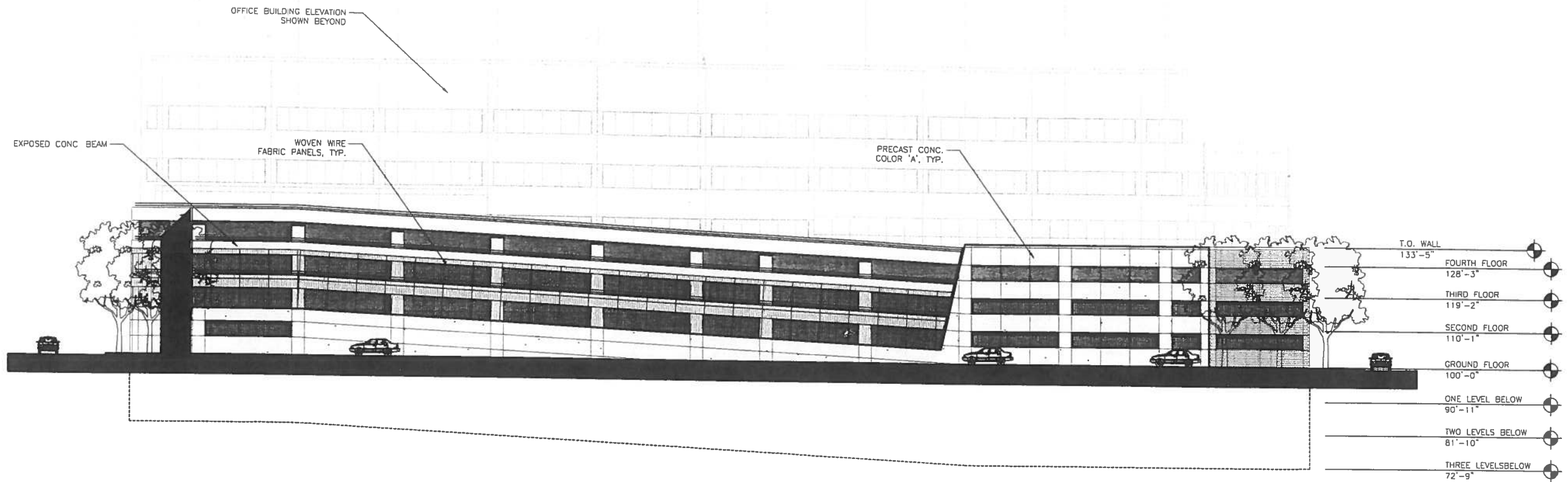
RAMP BEYOND



| | |
|--------------------|---------|
| T.O. WALL | 137'-7" |
| FIFTH FLOOR | 133'-5" |
| FOURTH FLOOR | 128'-3" |
| THIRD FLOOR | 119'-2" |
| SECOND FLOOR | 110'-1" |
| GROUND FLOOR | 100'-0" |
| ONE LEVEL BELOW | 90'-11" |
| TWO LEVELS BELOW | 81'-10" |
| THREE LEVELS BELOW | 72'-9" |

NORTH ELEVATION

1 2 3 4 5 6 7 8 9 10 11 12 13



SOUTH ELEVATION